



Viatrexx-Systemic Detox





Drainage vs. Detox

Drainage means open the elimination routes to facilitate flow

Detox associated to clean out system, tissues, cells (deeper action, moves from extra to intra)

Imagine a sink full of dish water after cleaning up from a spaghetti meal.

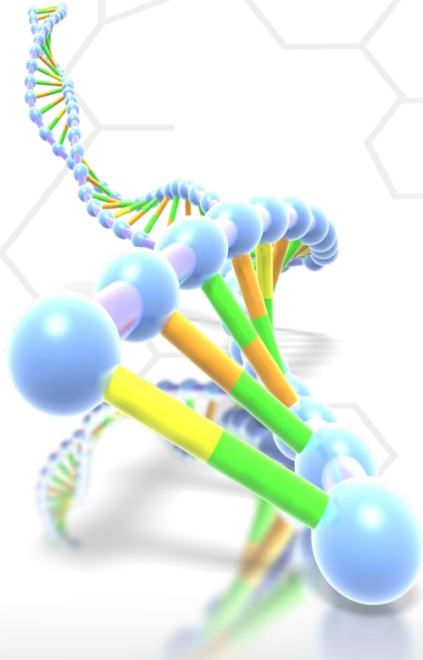
Opening the drain = **Drainage**

Cleaning oil & tomato stains from sink & wash cloth = **Detox**

Concept

- Incorporate all drainage and detox components into 1 bottle (rather than 3+ bottles)
- Address emotional insults where possible
- Supports Immune system
 - Simplicity
 - Client compliance
 - Cost effective

Viatrex Systemic Detox





Systemic Detox®

Item: VPC0665
NDC: 63776-500-15

Formula
50 ML/1.69 Oz bottle

20% Alcohol

Adrenal gland	30K	Adrenal support
Alpha Ketoglutaric Acid	6X, 30K	Cell regeneration
Alpha Lipic Acid	6X, 30K	Anti-aging
Ascorbic Acid	30K	Anti-oxidant
Berberis	5X, 200K	Drainage
Carbo vegetabilis	30K	Drainage
Cardus Beneditus	30K	Drainage
Cardus Marianus	30K	Drainage
Calcicum Autonomale	6C	Drainage
Galium Aparine	30K	Drainage
U-4	10K, 200K	Anti-inflammation
Kidney	6X, 200K	Regeneration
Liver	6X, 200K	Drainage
Lycopodium Clavatum	6X	Drainage
Lymph Node	6X, 200K	Immune support
Mesenchyma	6X, 200K	Regeneration
Nux Vomica	7X, 200K	Drainage
Taraxacum Officinale	6X, 200K	Drainage
Thymus	200K	Immune support
Thyroid	200K	Regeneration
Tonsil	6X, 200K	Regeneration

Dosage:
1 - 5 spray(s), 1 - 3 time(s)/day

© Viatrex Bio Inc. 2012

Indications for Use:

- * Full spectrum systemic drainage and detoxification
- * Matrix & Lymphatic cleanse
- * Kidney & Liver cleanse
- * Thyroid cleanse (E-M fields, X-rays & radiation)
- * Citric cycle & Cell rejuvenation & support
- * Adrenal support & Chi/Vitality preservation
- * Immune support
- * Blood cleanse & support

Oxygenation

- *Adrenal
- *Alpha Ketoglutaric Acid
- *Alpha Lipic Acid
- *Ascorbic Acid

Regeneration

- *U-4
- *Kidney
- *Liver
- *Lymph Node
- *Thymus
- *Thyroid
- *Tonsil

Drainage & Detox

- *Berberis
- *Carbo
- *Vegetabilis
- *Cardus
- *Benedictus
- *Cardus
- *Marianus
- *Calcicum
- *Autonomale
- *Galium
- *Aparine
- *Kidney
- *Liver
- *Lycopodium
- *Clavatum
- *Lymph
- *Node
- *Nux
- *Vomica
- *Taraxacum

Combinations:
1st drainage & detox remedy
Background & adjunct remedy for all hormonal, immune, neurological organ, or sensitivity remedy


ITEM: VPC0665
NDC 63776-500-15

Homeopathic remedy

Systemic Detox

• To help assist with systemic drainage & detox of all major systems

Oral spray
50ml 1.69 oz



The formula



Adrenal gland	30K	Adrenal support
Alpha Ketoglutaric Acid	6X, 30K	Cell respiration
Alpha Lipoic Acid	6X, 30K	Anti-aging
Ascorbic Acid	30K	Anti-oxidant
Berberis	5X, 200K	Drainage
Carbo vegetabilis	30K	Drainage
Carduus Benedictus	30K	Drainage
Carduus Marianus	30K	Drainage
Colchicum Automnale	6C	Drainage
Galium Aparine	30K	Drainage
IL-4	10X, 200K	Anti-inflammation
Kidney	6X, 200K	Regeneration
Liver	6X, 200K	Drainage
Lycopodium Clavatum	6X	Drainage
Lymph Node	6X, 200K	Immune support
Mesenchyme	6X, 200K	Regeneration
Nux Vomica	7X, 200K	Drainage
Taraxacum Officinalis	6X, 200K	Drainage
Thymus	200K	Immune support
Thyroid	200K	Regeneration
Tonsil	6X, 200K	Regeneration

Vital energy



Vital energy = energy production = ATP, cAMP



TCM guiding principle protect and re-enforce Chi



Ability to provide energy



Ability to recuperate

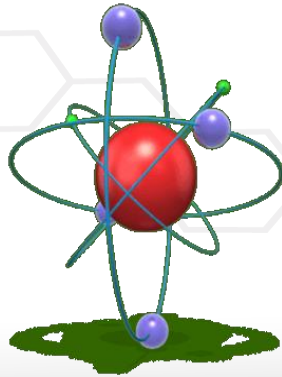


Ability to sustain



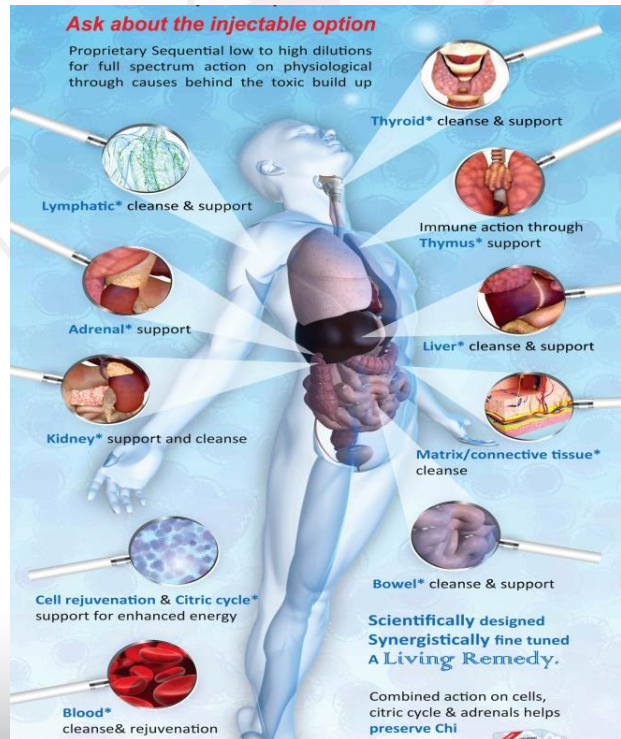
Certain functions may take more out of the body
Drainage & Detox are some of these functions

Energy support & production



• Adrenal gland	30K	Adrenal Support, exhaustion
• A-Ketoglutaric Acid	6X, 30K	Cell respiration, Krebs cycle
• Alpha Lipoic Acid	6X, 30K	Anti-aging , Kreb's cycle
• Ascorbic Acid	30K	Anti-oxidant, immune
• Berberis	5X, 200K	Drainage, general exhaustion
• Carbo vegetabilis	30K	Drainage, weakened & deterioration of vitality
• Carduus Benedictus	30K	
• Carduus Marianus	30K	
• Colchicum Automnale	6C	Drainage, great exhaustion
• Galium Aparine	30K	
• IL-4	10X, 200K	Anti-inflammation
• Kidney	6X, 200K	
• Liver	6X, 200K	
• Lycopodium Clavatum	6X	Drainage, weakness, exhaustion
• Lymph Node	6X, 200K	
• Mesenchyme	6X, 200K	
• Nux Vomica	7X, 200K	Drainage, tendency to catch colds
• Taraxacum Offi	6X, 200K	
• Thymus	200K	
• Thyroid	200K	Regeneration, adrenal support
• Tonsil	6X, 200K	

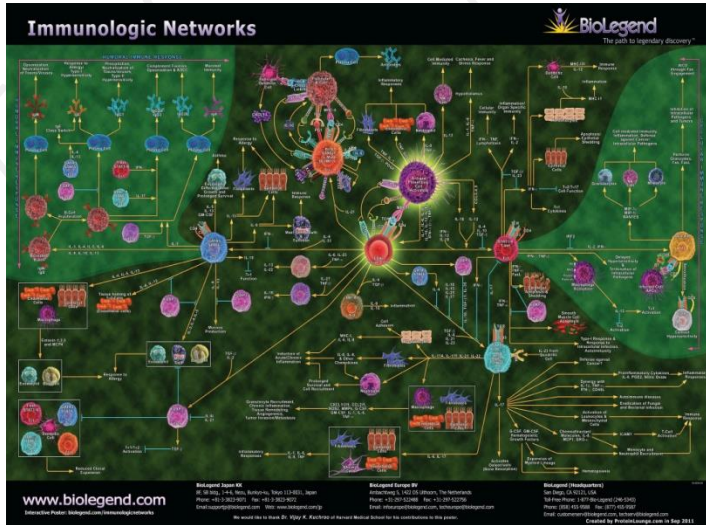
Drainage



Adrenal gland 30K
A-Ketoglutaric Acid 6X, 30K
Alpha Lipoic Acid 6X, 30K
Ascorbic Acid 30K
Berberis 5X, 200K
Carbo vegetabilis 30K
Carduus Benedictus 30K
Carduus Marianus 30K
Colchicum Automnale 6C
Galium Aparine 30K
 IL-4 10X, 200K
Kidney 6X, 200K
Liver 6X, 200K
Lycopodium Clavatum 6X
Lymph Node 6X, 200K
Mesenchyme 6X, 200K
Nux Vomica 7X, 200K
Taraxacum Offi 6X, 200K
 Thymus 200K
 Thyroid 200K
 Tonsil 6X, 200K

Cell respiration, Krebs cycle, cellular
 Anti-aging , Krebs cycle, cellular
 Anti-oxidant, circulatory
 Drainage, liver, urinary tract, mental
 Drainage, digestive, cardiac, respiratory, stomach
 Drainage, gallbladder, liver, vascular
 Bowels, gallbladder, liver, uterine, vascular
 Drainage, urinary, water retention
 Drainage, glandular, urinary, skin, nerve, geriatric
 Anti-inflammation, wound healing
 Regeneration, drainage, structure - function
 Drainage & detox, structure - function
 Gallbladder, liver, lymph, respiratory, skin, urinary,
 Lymphatic, structure - function
 Matrix, connective tissue, structure - function
 Bowel, gallbladder, GI tract, liver, stomach
 Gallbladder, Liver, neurological, Pancreas, Urinary

Immune



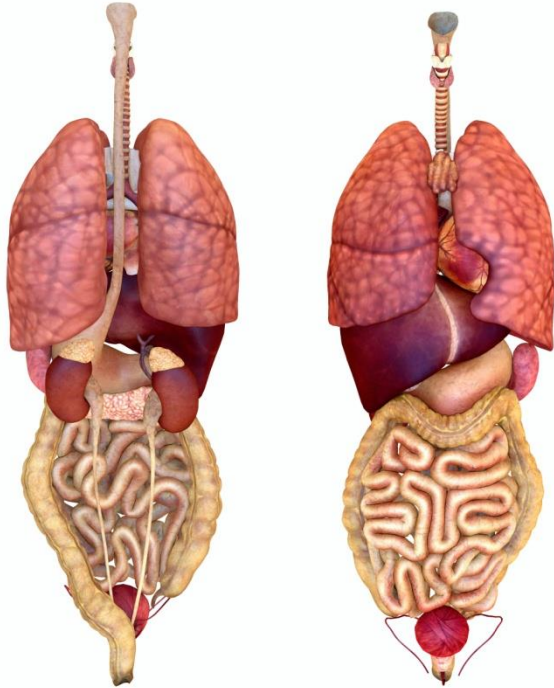
- **Adrenal gland** 30K Supports endocrine & energy production
- A-Ketoglutaric Acid 6X, 30K
- Alpha Lipoic Acid 6X, 30K
- Ascorbic Acid 30K
- Berberis 5X, 200K
- Carbo vegetabilis 30K
- Carduus Benedictus 30K
- Carduus Marianus 30K
- Colchicum Automnale 6C
- Galium Aparine 30K
- IL-4 10X, 200K Anti-inflammation, wound repair
- Kidney 6X, 200K
- Liver 6X, 200K
- Lycopodium Clavatum 6X
- **Lymph Node** 6X, 200K Immune support
- Mesenchyme 6X, 200K
- **Nux Vomica** 7X, 200K Drainage, tendency to catch colds
- Taraxacum Offi 6X, 200K
- **Thymus** 200K Immune support, structure - function
- **Thyroid** 200K Supports endocrine & energy production
- **Tonsil** 6X, 200K Regeneration, structure - function

Emotional Relations



• Adrenal gland	30K	Fear, indecision, procrastination
• A-Ketoglutaric Acid	6X, 30K	
• Alpha Lipoic Acid	6X, 30K	
• Ascorbic Acid	30K	Hurt, regret
• Berberis	5X, 200K	Anger, unhappiness, fright, impatient
• Carbo vegetabilis	30K	worry, anxiety, anger, joy, disgust, greed
• Carduus Benedictus	30K	rage, wrath, anger, unhappiness, regret
• Carduus Marianus	30K	guilt, insecurity, regret, hurt
• Colchicum Automnale	6C	fear, indecision, fright, impatient, restless
• Galium Aparine	30K	Hopelessness, depression, despair
• IL-4	10X, 200K	
• Kidney	6X, 200K	fear, indecision
• Liver	6X, 200K	anger, unhappiness
• Lycopodium Clavatum	6X	rage, wrath, anger, grief, fear, fright
• Lymph Node	6X, 200K	hurt, jealousy, regret
• Mesenchyme	6X, 200K	
• Nux Vomica	7X, 200K	guilt, disgust, greed, insecurity, anger
• Taraxacum Offi	6X, 200K	rage, wrath, anger, fear
• Thymus	200K	hopelessness, depression, despair
• Thyroid	200K	hopelessness, depression, despair
• Tonsil	6X, 200K	Unable to speak or communicate

Function



Work within bioresonance framework & adopt

“like cures like”

Herings laws:

Inside to out

Most important to least

Top to bottom

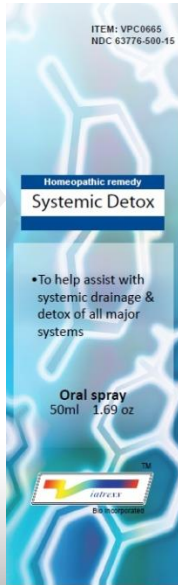
Most recent to oldest

If this is so then,

body will take what it needs from the remedy at that moment

the next dose potentially move on to another aspect

Dosaging



Comes in 50 ml bottle
1 squirt = 5 drops

1st Month – 1 squirt before going to bed or in day's water
(if well tolerated after 2 weeks, increase to 2 squirts)

2nd Month – 2 squirts before going to bed
If already at 2 squirts go to 3 or add 1 squirt in am

3rd month rest (rest after 2 mths)

4th month continue and increase as tolerated to
1 – 2 squirts am with 2 – 3 squirts pm

May be used with any other remedy

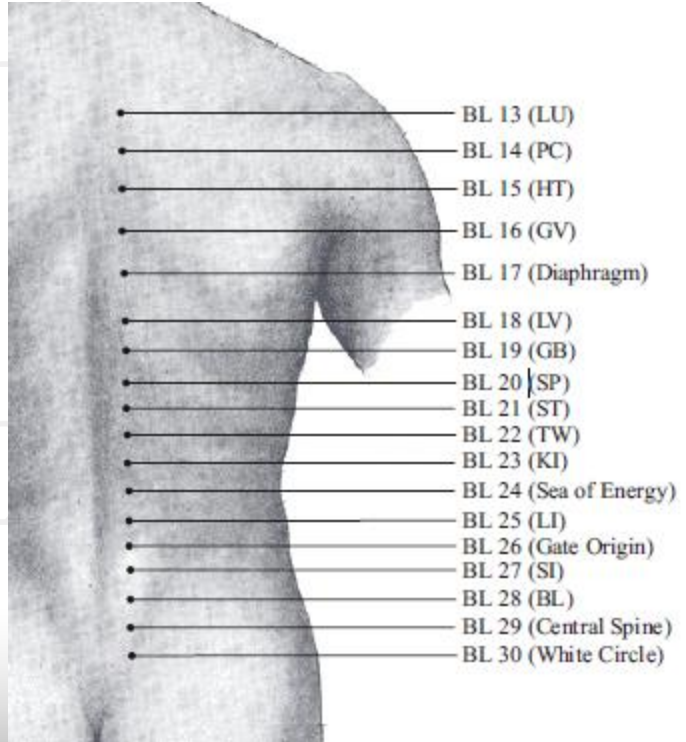
Injection Locations

Back Shu points are about 1 ½ inches on either side of the center spine.

They are part of the Bladder meridian & the various points correspond to respective body systems.

Consider doing a wheel at the point(s) which correspond to the desired system(s).

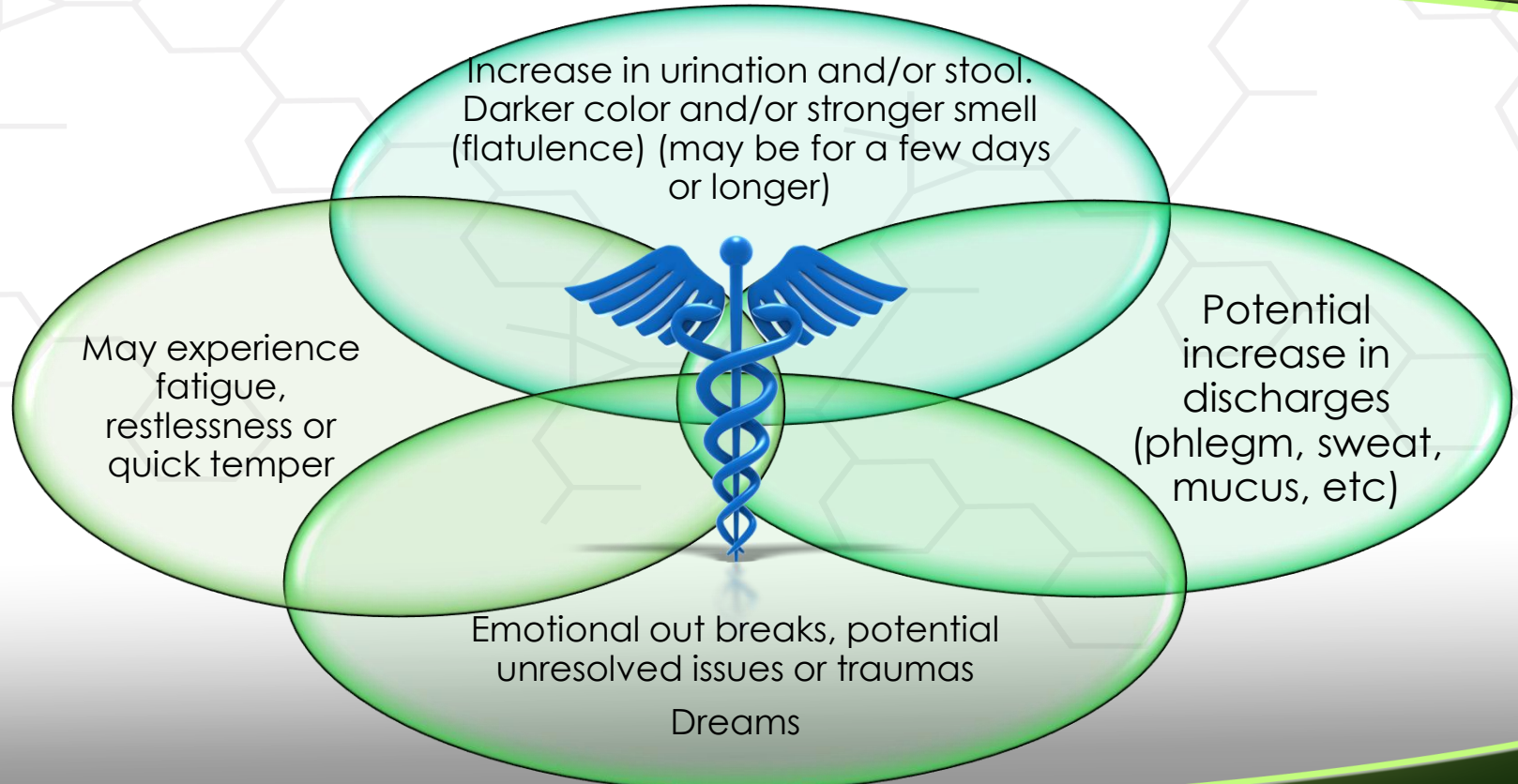
Alarm points are others to consider.



<u>MERIDIAN</u>	<u>ASSOCIATED POINT</u>	<u>LOCATION</u>
LU	BL 13	T3
PC	BL 14	T4
HT	BL 15	T5
GV	BL 16	T6
LV	BL 18	T9
GB	BL 19	T10
SP	BL 20	T11
ST	BL 21	T12
TW	BL 22	L1
KI	BL 23	L2
LI	BL 25	L4
SI	BL 27	S1
BL	BL 28	S2

1.5 cun lateral and level with spinous process of vertebrae.

What to expect {means its working}



Questions?



In the US:

Viatrexx Bio Incorporated

2915 Ogletown Road #1633

Newark, DE, 19713

Tel: 1-888-337-8427

Fax: 1-888-536-1294

Info@Viatrexx.com

www.Viatrexx.com

Viatrexx (CANADA)

2-825 Yvon L'Heureux N Boul

Beloeil, Qc, Canada, J3G 6M2

Tel: 1-877-487-8776

Fax: 1-888-536-1294

Info@Viatrexx.ca

Disclaimer

The information in this presentation is for educational purposes only and express an opinion. It is not intended for use in diagnosing, treating, mitigating, curing or addressing any disease or individual. These statements have not been reviewed by any government authority. The formulas shown here are for an International audience. Formulas may be different or not available in various countries due to government regulations, regardless if a country is displayed within the presentation. No part of this presentation nor the proprietary process may be used or copied without the express written consent of the author.